

SAGE FLOOR PLAN

UNIT 103

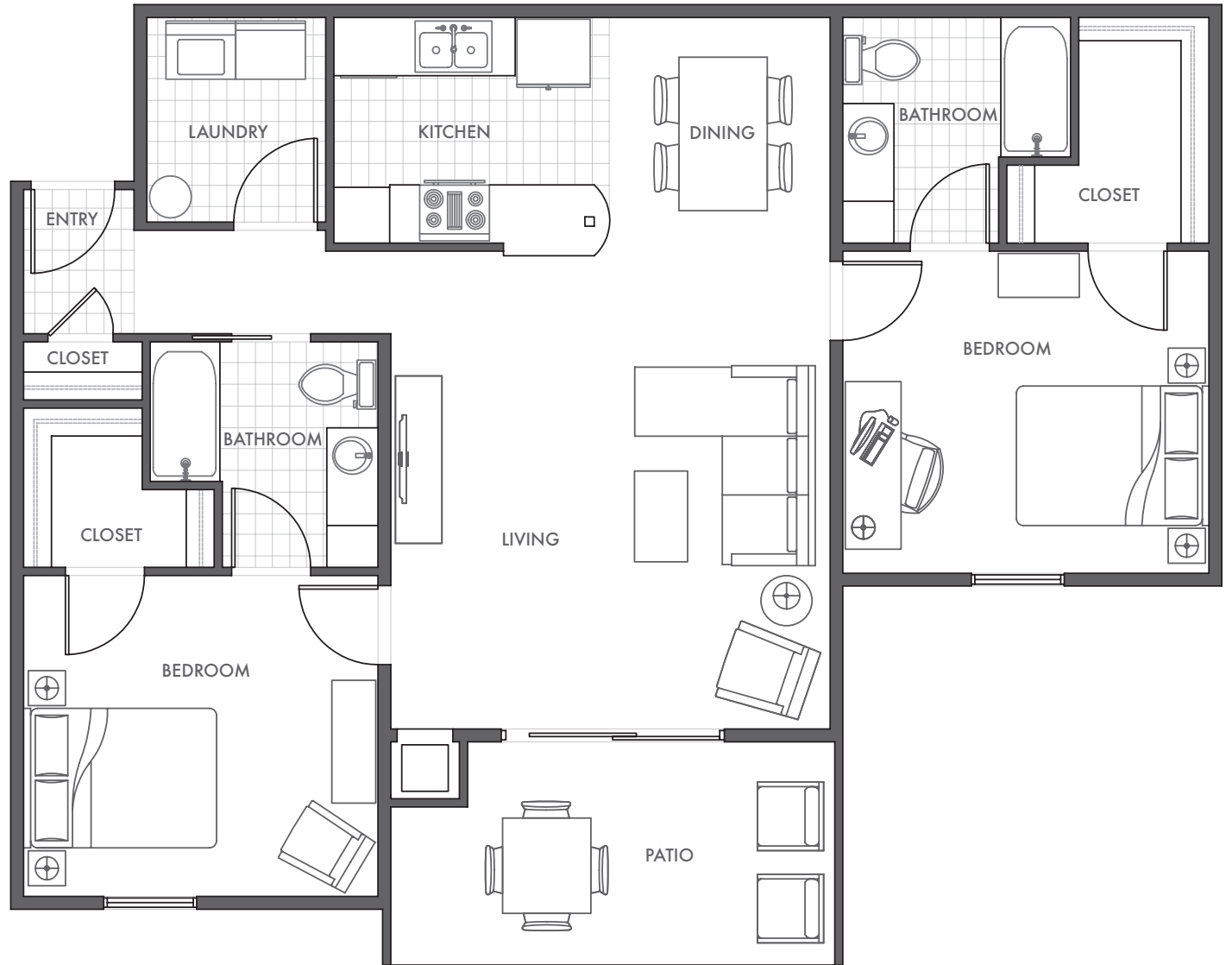
10909 Preston Gardens Court
Floor 1

2 Bed / 2 Bath

1131 SQ. FT.

FEATURES

- Fitness Room
- Pet Friendly
- Package Receiving
- 9Ft Ceilings
- Detached Garages
- Roomy Interiors
- Walk-in Closets
- Ceiling Fans
- Balcony/Patio
- Black appliances
- Modern finishes
- Wooded View



PRESTON GARDENS
APARTMENTS

(502) 716-6692
11011 PRESTON GARDENS CT.
LOUISVILLE, KY 40229

WWW.PRESTONGARDENS.COM

