

# SAGE FLOOR PLAN

## UNIT 203

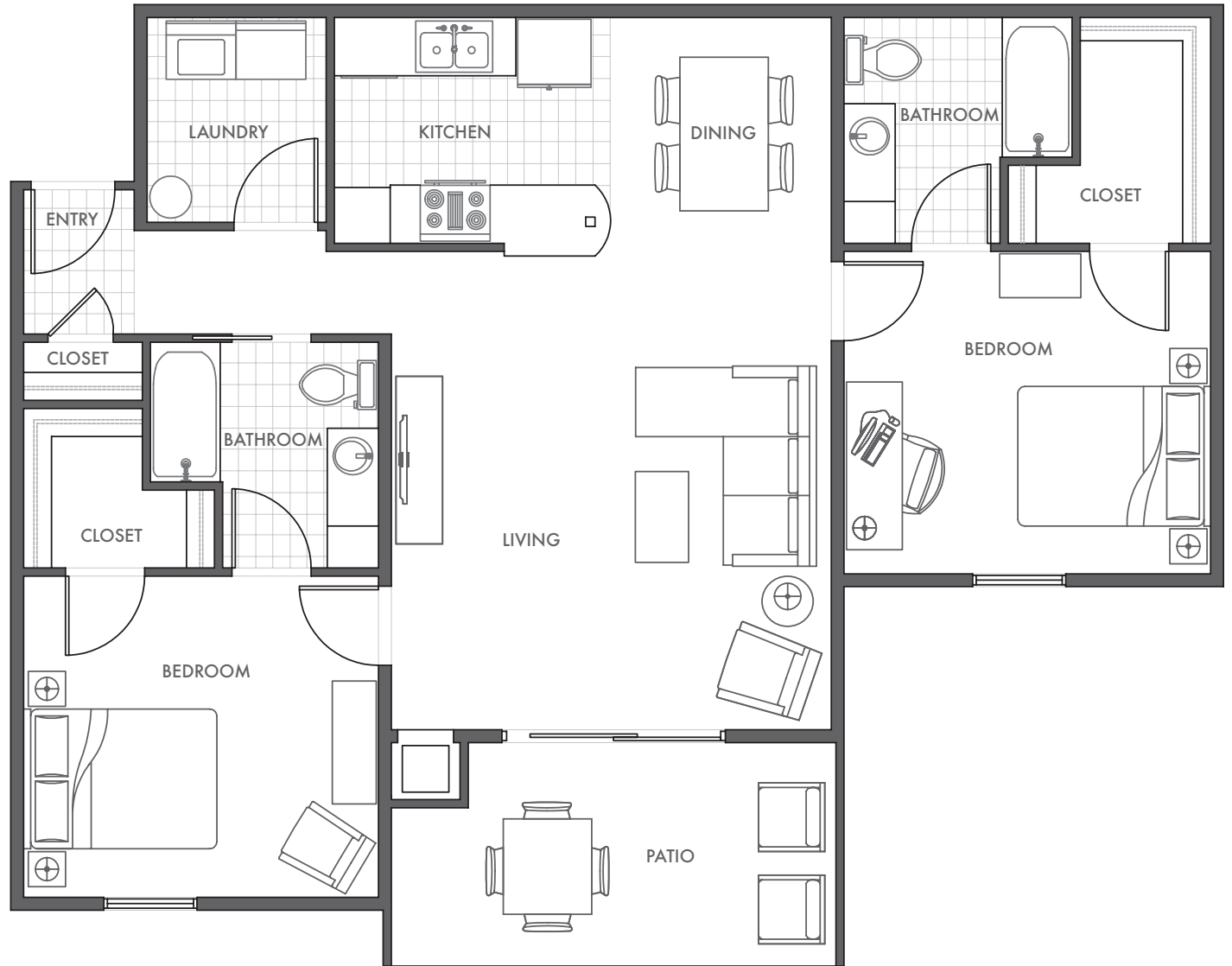
10909 Preston Gardens Court  
Floor 1

## 2 Bed / 2 Bath

1131 SQ. FT.

### FEATURES

- Fitness Room
  - Pet Friendly
  - Package Receiving
  - 9Ft Ceilings
  - Detached Garages
  - Roomy Interiors
  - Walk-in Closets
  - Ceiling Fans
  - Balcony/Patio
  - Black appliances
  - Modern finishes
- Wooded View



**PRESTON GARDENS**  
APARTMENTS

(502) 716-6692  
11011 PRESTON GARDENS CT.  
LOUISVILLE, KY 40229

WWW.PRESTONGARDENS.COM

