

SAGE FLOOR PLAN

UNIT 304

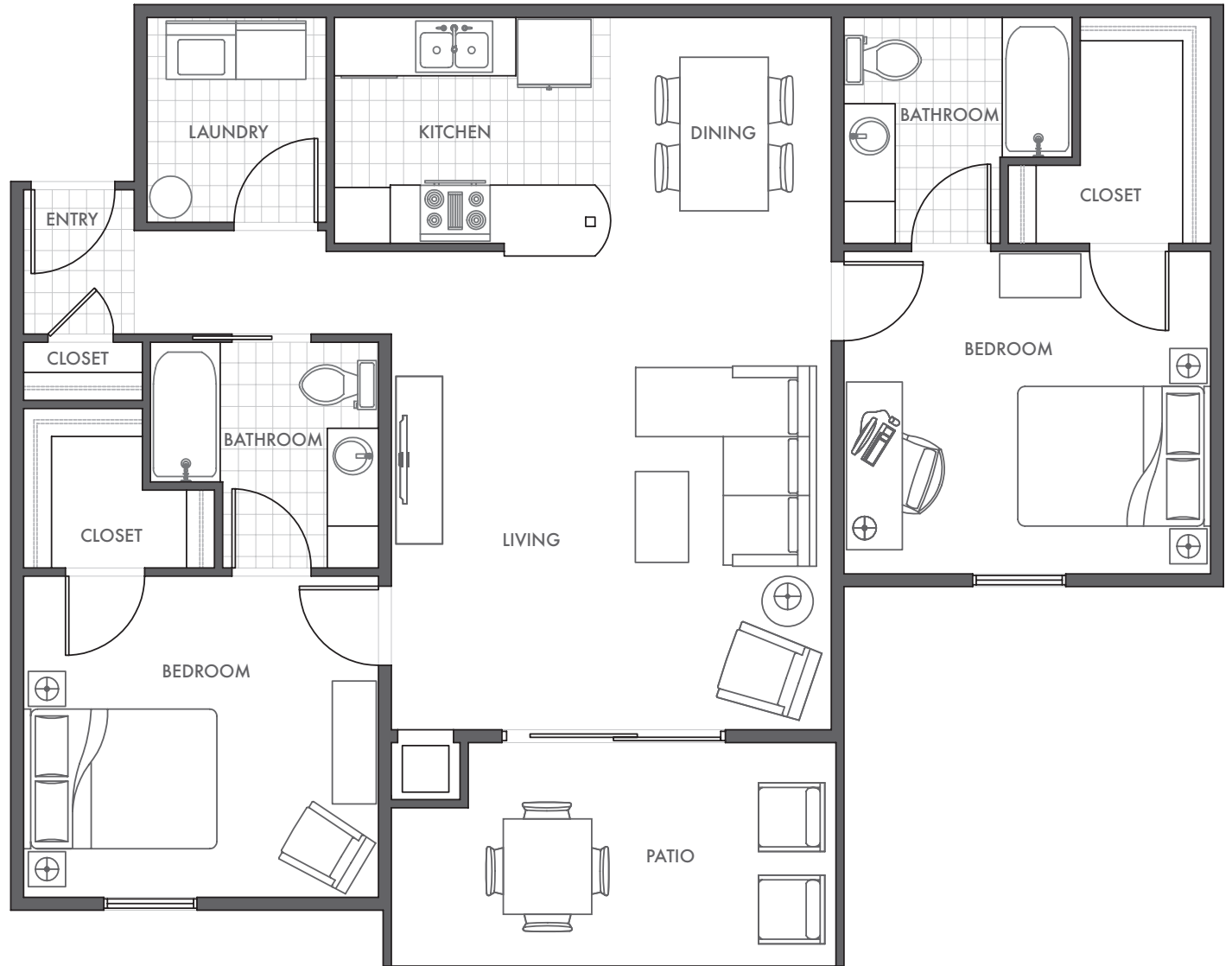
10911 Preston Gardens Court
Floor 1

2 Bed / 2 Bath

1131 SQ. FT.

FEATURES

- Fitness Room
 - Pet Friendly
 - Package Receiving
 - 9Ft Ceilings
 - Detached Garages
 - Roomy Interiors
 - Walk-in Closets
 - Ceiling Fans
 - Balcony/Patio
 - Black appliances
 - Modern finishes
- Wooded View



PRESTON GARDENS
APARTMENTS

(502) 716-6692
11011 PRESTON GARDENS CT.
LOUISVILLE, KY 40229

WWW.PRESTONGARDENS.COM

